

Self-Aligning Pads • adjustable
22740.0013



Product Description

Self-aligning pads are used as stop, support and thrust pad and are suitable for installation in clamping elements.

Material

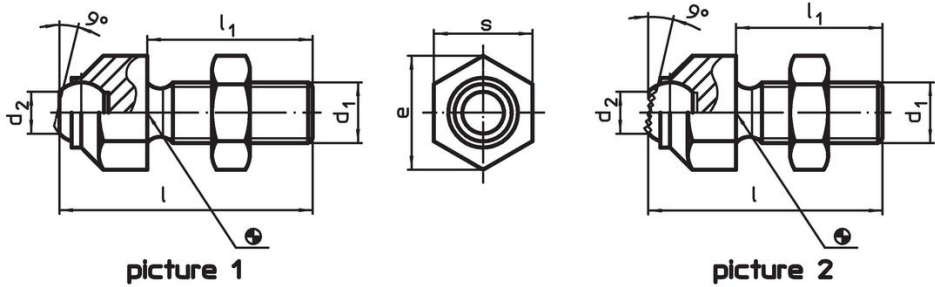
- Ball**
- Ball-bearing steel, hardened, bright
- Body**
- Heat-treated steel, tempered, phosphated
- Nut**
- Steel, blackened (ISO 4035)

More information


Notes

Ball protected against rotating.
Loading capacity valid for steel and stainless steel designs.
Special types on request.

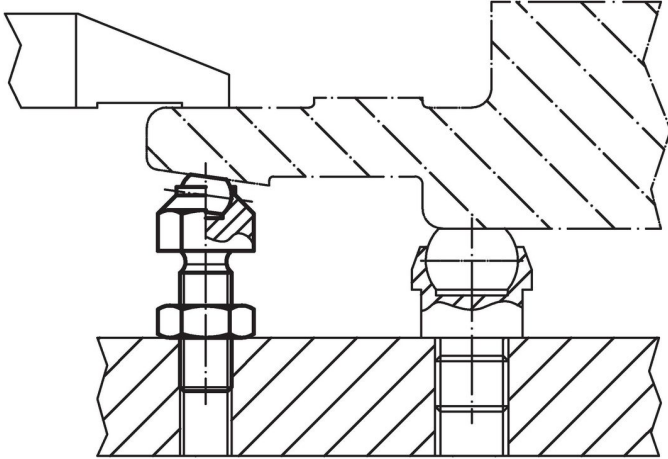
Drawing



Order information

Dimensions					Ball diameter	Load capacity for static load max. [kN]	Tightening torque max. [Nm]	 [g]	Art. No.
d ₁	l	l ₁	d ₂	e					
[mm]									
with flat-faced ball, bearing surface plain – picture 1, Heat-treated steel									
M8	36.6	25	5.8	14.5	8.5	8	25	20	22740.0013

Application example



Compliance

RoHS compliant

Compliant according to Directive 2011/65/EU and Directive 2015/863.

Does not contain SVHC substances

No SVHC substances with more than 0.1% w/w contained - SVHC list [REACH] as of 23.01.2024.

Does not contain Proposition 65 substances

No Proposition 65 substances included.

<https://www.P65Warnings.ca.gov/>

Free from Conflict Minerals

This product does not contain any substances designated as "conflict minerals" such as tantalum, tin, gold or tungsten from the Democratic Republic of Congo or adjacent countries.