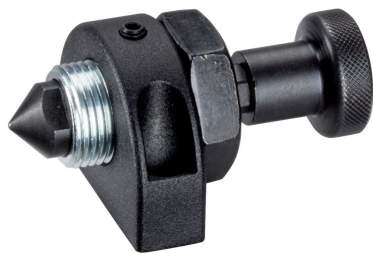


Push Plungers • with pin, protected against rotating

23230.0530



Product Description

The push plunger is suitable for easy and safe positioning of workpieces or components at stops and support points prior to clamping or assembly.
Locating pins of your own profile or design can be attached to our threaded pin types.

Material

Pin

- Steel, case-hardened, blackened

Body

- Steel, zinc-plated by galvanization

Grub Screw

- Steel, blackened, with brass pad

Mounting block

- Zinc die-cast, plastic coated, black

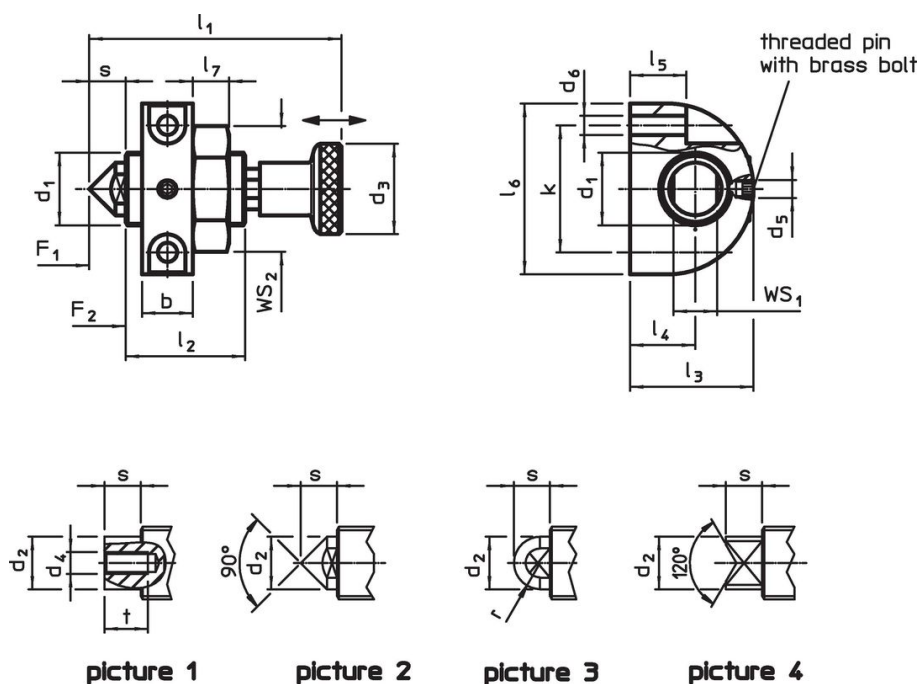
Knob

- Steel, blackened

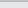
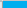
Lock nut

- Steel, blackened

Drawing

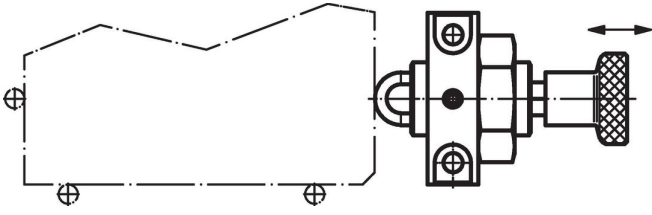


Order information

Dimensions														Stroke	WS		Spring load ¹⁾				Art. No.
d ₁	d ₂	d ₃	d ₅	d ₆	l ₁	l ₂	l ₃	l ₄	l ₅	l ₆	l ₇	b	k	s	WS ₁	WS ₂	F ₁	F ₂	max.		
[mm]														[mm]	[mm]		[N]		°C	[g]	
with tipped point – picture 2																					
M12 x 1,5	9	21	M4	4.3	46	19	26	14	11.5	35	6	12	25	6	8	19	16	35	100	85	23230.0530

¹⁾ statistical average value

Application example



Compliance

RoHS compliant

Contains lead - compliant according to exceptions 6a / 6b / 6c.

Contains SVHC substances >0,1% w/w

Contains lead - SVHC list [REACH] as of 23.01.2024.

Contains Proposition 65 substances



Lead can cause cancer and reproductive harm from exposure
<https://www.P65Warnings.ca.gov/>

Free from Conflict Minerals

This product does not contain any substances designated as "conflict minerals" such as tantalum, tin, gold or tungsten from the Democratic Republic of Congo or adjacent countries.