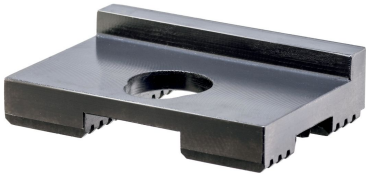


Stop Plates for Taper Clamping Units • for clamping bars

23250.0540



Product Description

The stop plate is used when clamping only on one side of the taper clamping unit. One side of the taper clamping unit rests against the step of the stop plate and is thus fixed.

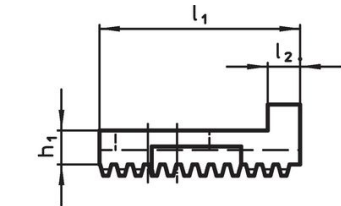
Material

- Tool steel, hardened

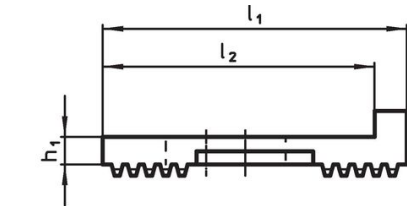
Assembly

The stop plate is mounted between the clamping bar and the taper clamping unit.

Drawing




picture 1



picture 2

Order information

Dimensions					for taper clamping units		Art. No.
l_1	l_2	b_1	b_2	h_1			
[mm]						[g]	
picture 1							
31	5	10	44	6.4	23250.0501 - .0503	61	23250.0540

Compliance

RoHS compliant

Compliant according to Directive 2011/65/EU and Directive 2015/863.

Does not contain SVHC substances

No SVHC substances with more than 0.1% w/w contained - SVHC list [REACH] as of 23.01.2024.

Does not contain Proposition 65 substances

No Proposition 65 substances included.

<https://www.P65Warnings.ca.gov/>

Free from Conflict Minerals

This product does not contain any substances designated as "conflict minerals" such as tantalum, tin, gold or tungsten from the Democratic Republic of Congo or adjacent countries.