

Eccentric Quick Clamps • with female thread

23390.0102



Product Description

For quick and easy clamping and releasing of workpieces.
When using the "adjustable" design (picture 2) the lever position can be moved.

Material

Support washer

- Thermoplastic POM, glass-fiber reinforced

Lever

- Zinc die-cast, plastic coated, black, similar to RAL 9005

Threaded part

- Steel, zinc-plated by galvanization

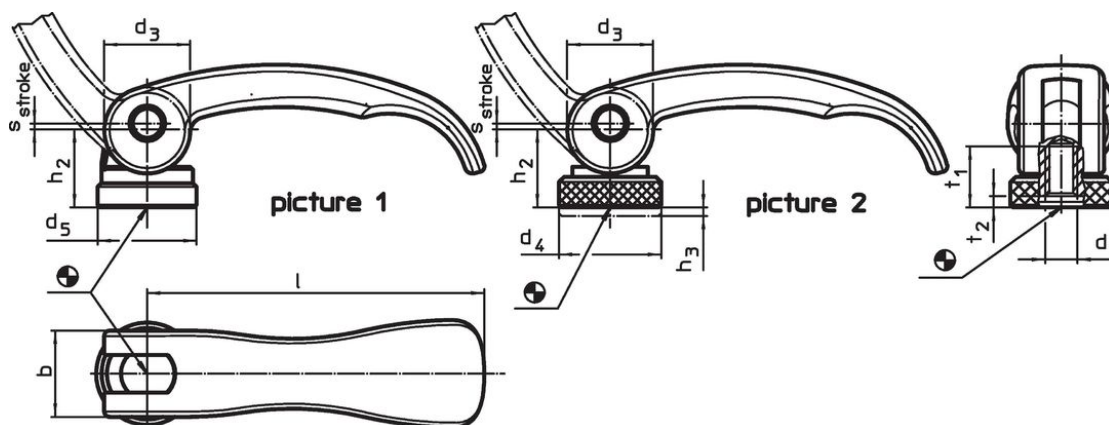
Inner parts

- Steel, zinc-plated by galvanization



Adjusting nut

- Steel, zinc-plated by galvanization

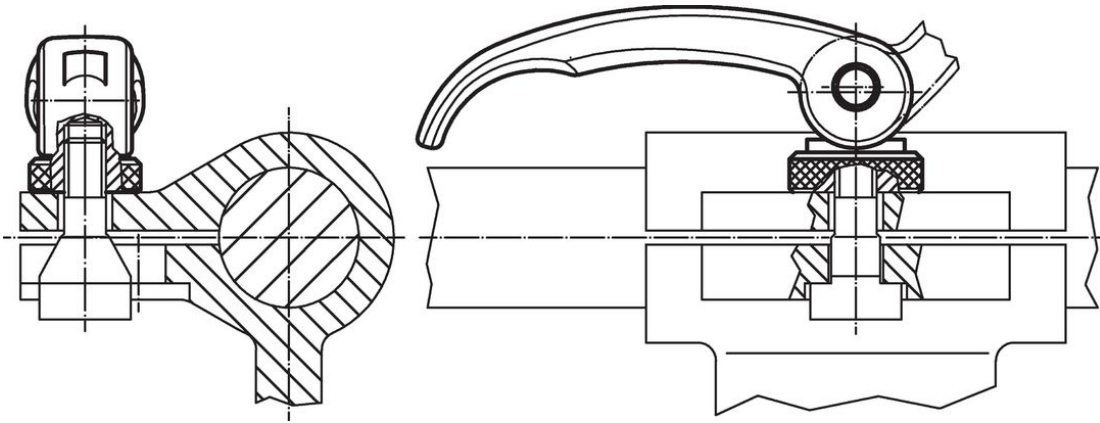
Drawing



Order information

Dimensions									Stroke s at 90° lever position	 max.	 [g]	Art. No.
l	d ₁	d ₃	d ₄	h ₂ max.	Regulating- range h ₃ min.	b	t ₁	t ₂ min. in clamping position				
[mm]												
with female thread, adjustable – picture 2, Steel												
82	M8	20	25	19.5	2.5	20	15	3.7	1	80	131	23390.0102

Application example



Compliance

RoHS compliant

Contains lead - compliant according to exceptions 6a / 6b / 6c.

Contains SVHC substances >0,1% w/w

Contains lead - SVHC list [REACH] as of 23.01.2024.

Contains Proposition 65 substances



Lead can cause cancer and reproductive harm from exposure
<https://www.P65Warnings.ca.gov/>

Free from Conflict Minerals

This product does not contain any substances designated as "conflict minerals" such as tantalum, tin, gold or tungsten from the Democratic Republic of Congo or adjacent countries.