

Gear Lever Handles  
24350.0640

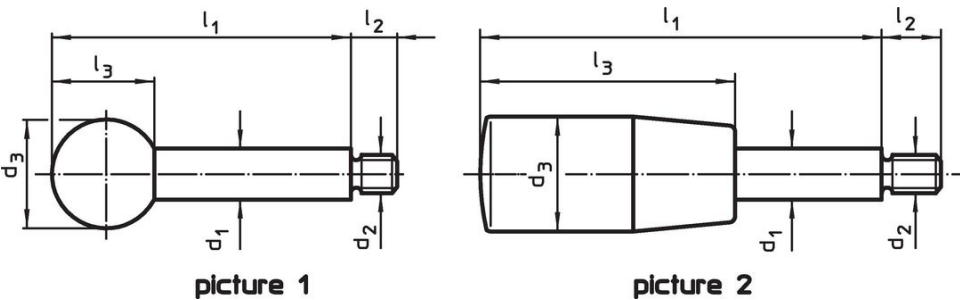


Product Description



Material

- Gear lever handle**
  - Stainless steel 1.4305, dull blasted
- Ball knob**
  - Thermosetting plastic PF 31, black, DIN 319
- Cylindrical handle**
  - Thermosetting plastic PF 31, black

Drawing



Order information

Dimensions						 max. [°C]	 [g]	Art. No.
d <sub>1</sub>	l <sub>1</sub>	d <sub>2</sub> [mm]	d <sub>3</sub>	l <sub>2</sub>	l <sub>3</sub>			
with cylindrical handle – picture 2, Stainless steel								
12	100	M10	23	14	65	110	81	24350.0640

## Application example



## Compliance

### RoHS compliant

Compliant according to Directive 2011/65/EU and Directive 2015/863.

### Does not contain SVHC substances

No SVHC substances with more than 0.1% w/w contained - SVHC list [REACH] as of 23.01.2024.

### Does not contain Proposition 65 substances

No Proposition 65 substances included.

<https://www.P65Warnings.ca.gov/>

### Free from Conflict Minerals

This product does not contain any substances designated as "conflict minerals" such as tantalum, tin, gold or tungsten from the Democratic Republic of Congo or adjacent countries.