

## Tommy Screws • DIN 6306 with moveable pin

### 24500.0120



#### Product Description

With this version, the pin is moveable and held by the spring.

#### Material

- Free cutting steel, blackened, pressure lug hardened.

#### More information

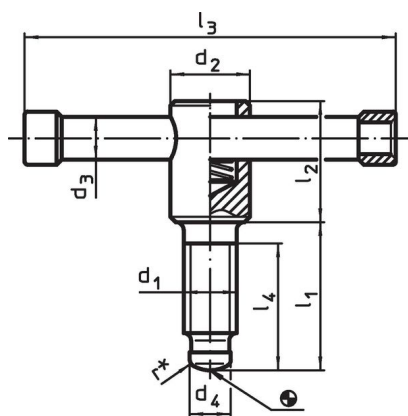
#### References

Thrust point for thrust pad DIN 6311 form S, EH 22560.

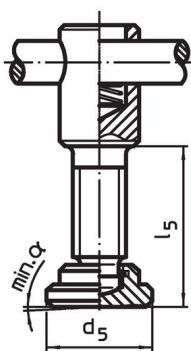
#### Further products

- Thrust Pads, DIN 6311 and low model

#### Drawing




picture 1



picture 2

\* to ease assembly the DIN 6306 specification has been completed by r

#### Order information

Dimensions										α min.		Art. No.
d <sub>1</sub>	l <sub>1</sub>	d <sub>2</sub>	d <sub>3</sub>	d <sub>4</sub>	d <sub>5</sub>	l <sub>2</sub>	l <sub>3</sub>	l <sub>4</sub>	l <sub>5</sub>			
[mm]											[g]	
with thrust pad, form E – picture 2												
M20	55	30	16	15.5	40	45	140	45	60.5	4°	623	24500.0120

## Compliance

### RoHS compliant

Contains lead - compliant according to exceptions 6a / 6b / 6c.

### Contains SVHC substances >0,1% w/w

Contains lead - SVHC list [REACH] as of 23.01.2024.

### Contains Proposition 65 substances



Lead can cause cancer and reproductive harm from exposure  
<https://www.P65Warnings.ca.gov/>

### Free from Conflict Minerals

This product does not contain any substances designated as "conflict minerals" such as tantalum, tin, gold or tungsten from the Democratic Republic of Congo or adjacent countries.