

## Ball Knobs • metal types similar to DIN 319

### 24561.0016



#### Product Description

##### Material

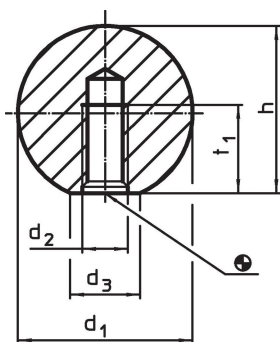
- Steel, polished, bright

##### More information


##### Notes

Supplement DIN 319 Form C about metallic versions.

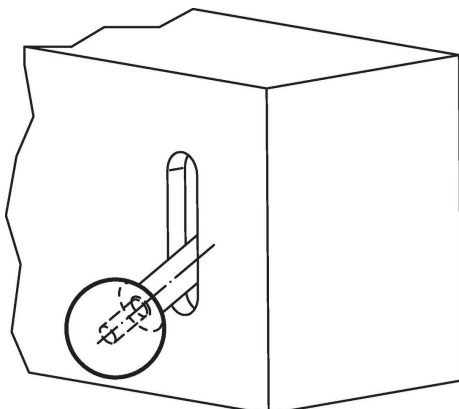
#### Drawing



#### Order information

| d <sub>1</sub> | d <sub>2</sub> | Dimensions                  |  | h  | t <sub>1</sub><br>min. | <br>[g] | Art. No.   |
|----------------|----------------|-----------------------------|--|----|------------------------|--|------------|
|                |                | d <sub>3</sub><br>~<br>[mm] |  |    |                        |  |            |
| Steel          |                |                             |  |    |                        |  |            |
| 16             | M4             | 8                           |  | 15 | 7                      | 16   | 24561.0016 |

#### Application example



## Compliance

### RoHS compliant

Contains lead - compliant according to exceptions 6a / 6b / 6c.

### Contains SVHC substances >0,1% w/w

Contains lead - SVHC list [REACH] as of 23.01.2024.

### Contains Proposition 65 substances



Lead can cause cancer and reproductive harm from exposure  
<https://www.P65Warnings.ca.gov/>

### Free from Conflict Minerals

This product does not contain any substances designated as "conflict minerals" such as tantalum, tin, gold or tungsten from the Democratic Republic of Congo or adjacent countries.