

Clamping Element Systems

EH 23700.



Product Description

Material

Body
• Steel, blackened

Wearing parts
• Heat-treated steel

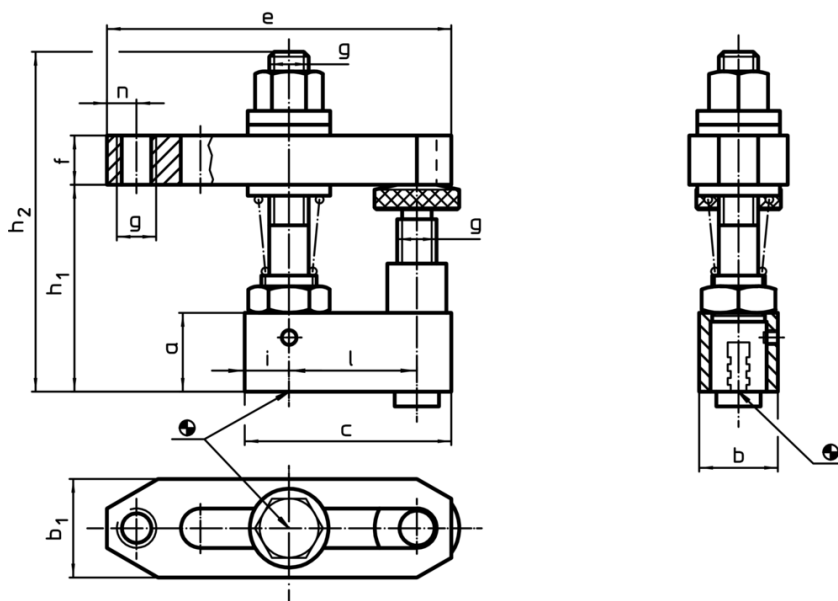
Pull-rod
• Special steel

More information

Further products

- Straight Clamps, long
- Intermediate Elements
- Intermediate Elements, with support
- Base Elements
- Base Elements, swivelling
- Base Elements, low
- Base Elements, for location hole

Drawing



Order information

Dimensions												[g]	RoHS	REACH	Art. No.
a	b	c	b ₁	e	f	g	h ₁	h ₂	i	l	n				
25	25	65	35	110	20	M12	48 – 78	112	12.5	40	10	870	RoHS-compliant	contains no SVHC materials	23700.0012
30	30	78	40	142	30	M16	60 – 96	145	14.0	50	13	1703	RoHS-compliant	contains no SVHC materials	23700.0016

Application example

